

08 September 2025

Attendance and Outcomes

Dear Parent/Carer

We hope this letter finds you well and you had a relaxing summer.

The students are all back in school and last week flew past as we embark on another academic year. As we begin a new school year, we would like to highlight the important relationship between school attendance and outcomes. It will come as no surprise to you that GCSE outcomes have a very strong link with future outcomes. Higher GCSE outcomes have been shown to impact the following:

- **Employment Opportunities** – The majority of employers use GCSEs to filter potential employees when hiring. The better your GCSE grades, the more job opportunities available and the more choice someone has.
- **Access to Further Education** – A-levels, BTECs and apprenticeships typically have a minimum requirement for GCSEs, especially in English and maths.
- **Access to Higher Education** – University degrees and degree apprenticeships will also look at GCSE grades when choosing between candidates.
- **Long-term Earnings** – It has been shown that higher GCSE grades typically lead to higher lifetime earnings. Each grade improvement is associated with a significant increase in lifetime earnings. Moving from a 3 to a 4 or a 6 to a 7 increases the chances of a young person earning more in the future and therefore having a more comfortable life. This is particularly true for young people from backgrounds with less income: better grades improve long-term prospects for them most of all.
- **Skills, confidence and values** – Putting effort into school and academic learning is linked with improvements in skills like time management and problem-solving. It also boosts young people's confidence, curiosity and autonomy, developing students morally and socially so they can flourish in their futures.

How do you begin to support your child with their education to give them these opportunities? There are many ways of doing this, but the single biggest factor is **attendance**. By ensuring your child attends school will have the biggest impact on their future outcomes. A recent report from the Department for Education found the following:

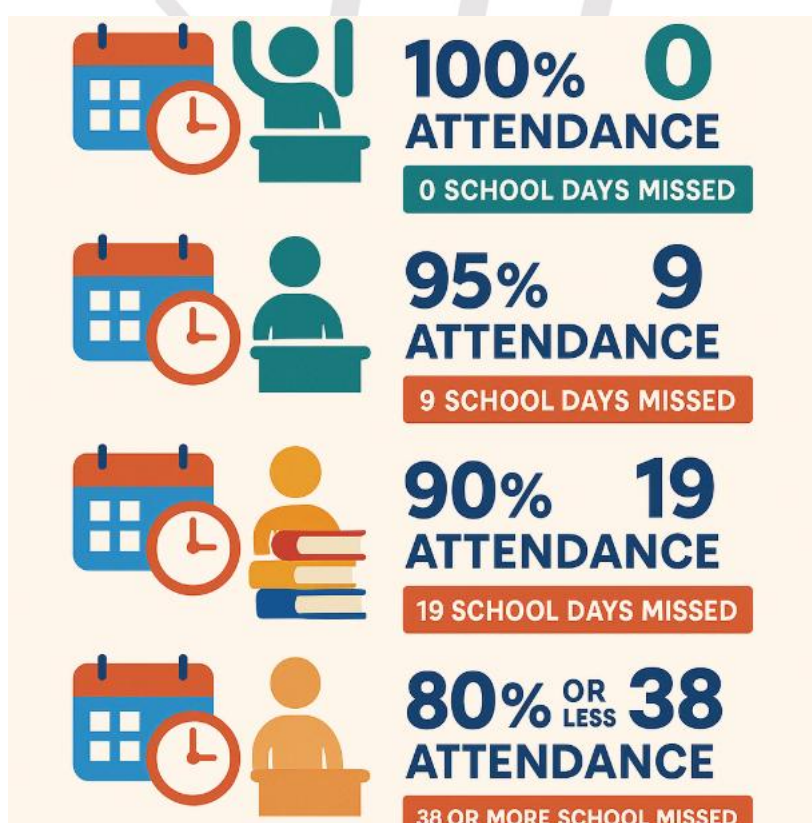
- Students with attendance 95-100% (missing no more than 1 day a month) have **double the chance of achieving a grade 5 in English and Maths** compared to students who attend 90-95% of the time (missing 1 day every 2-4 weeks).
- This means that **missing 10 days in year 11 reduces a student's chances of getting a grade 5 by 50%**. They are half as likely to get a strong pass than a student who misses 0-5 days.

- Students with attendance 85-90% are **three times less likely to achieve a grade 5 in English and Maths** than students with attendance of 95-100%. They are 1.5 times less likely than a student who attends 90-95%. This shows that any improvement in attendance increases a student's chances.

This is supported by our own findings at Ecclesfield. Below are the average grade outcomes for the last Y11 cohort at Ecclesfield:

Attendance band	95-100% attendance	90-95% attendance	80-90% attendance	Less than 80% attendance	Whole school
Average GCSE grade	4.83	3.95	3.50	2.47	4.15

The average student at Ecclesfield achieves a grade 5 (a strong pass) across their subjects if they are here 95% or more. They achieve a grade more per subject than students who are here 90-95% of the time. Two days off per month compared to one day off per month sees a student drop by one grade in every subject they take. The average student does not achieve a grade 4 pass average at GCSE if they are here less than 90% of the time.

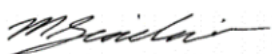


As we start a new school year, can we ask that you do all you can to get your child to school? If we can support you with this, please don't hesitate to contact us. You can phone school or email attendance@ecclesfield-mlt.co.uk. We will do all we can to support you with getting your child to school if this is an issue.

We endeavour to continue to improve the outcomes and wellbeing of students who attend Ecclesfield School. We are confident that if your child attends regularly (95% or higher), then the quality of our teaching, and learning and the care and support provided, will lead to outcomes that your child will be proud of and that gives them more opportunities in the future.

Thank you for your support. If you have any queries, please do not hesitate to contact us.

Kind regards



Mr Michael Sinclair
Assistant Headteacher – Data and Outcomes
msinclair@ecclesfield-mlt.co.uk



Headteacher