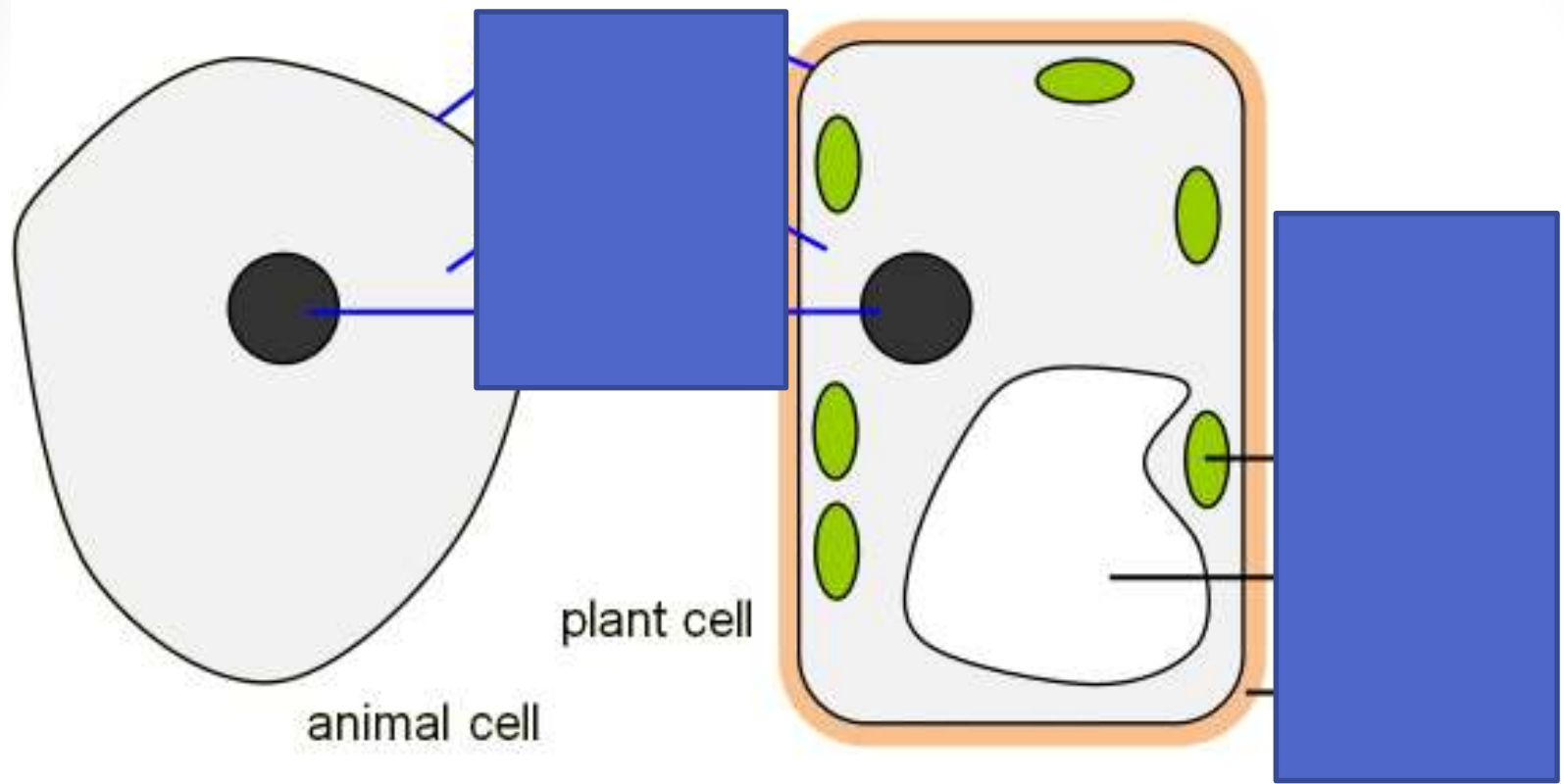
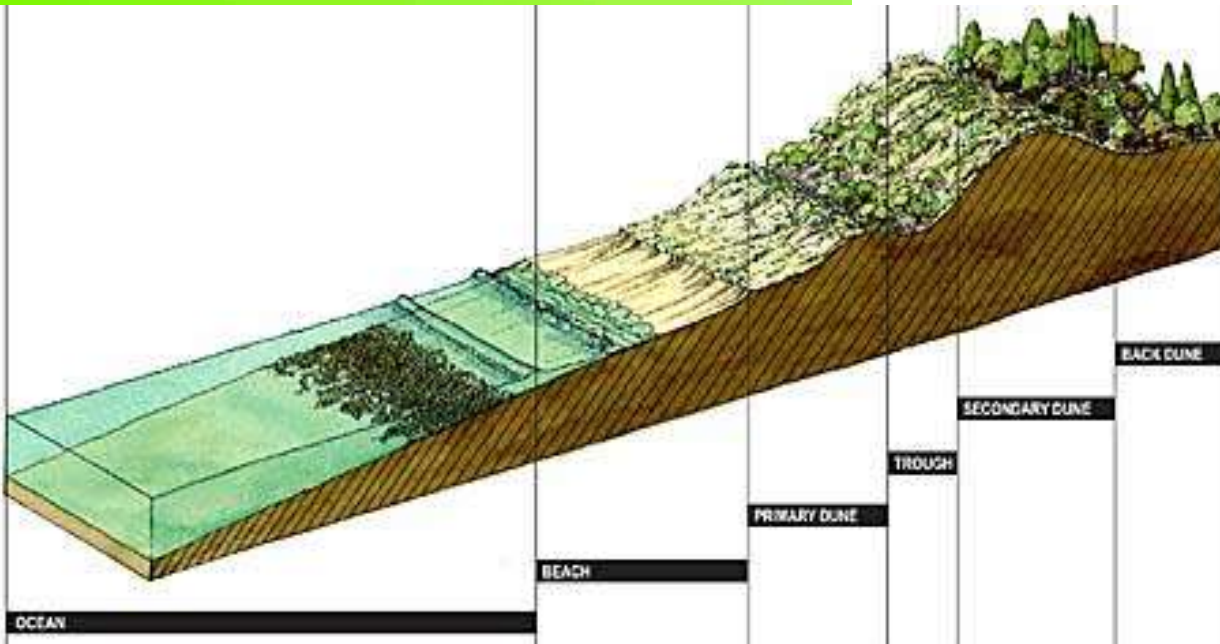
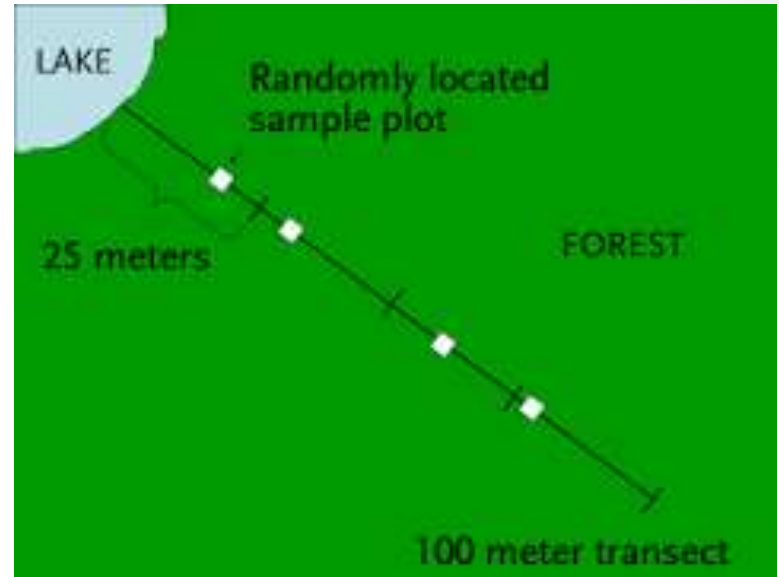


Three factors can affect photosynthesis

- 1. Temperature - the best temperature is about 30°C - anything above 40°C will slow photosynthesis right down*
- 2. CO₂ - if there is more carbon dioxide photosynthesis will happen quicker*
- 3. Light - if there is more light photosynthesis happens faster*

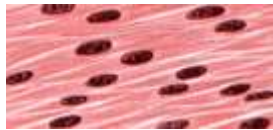




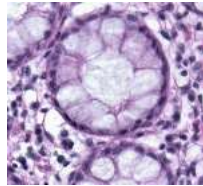


What are tissues?

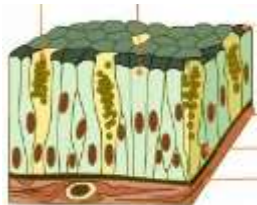
A **tissue** is a group of specialised cells that have a similar structure and function.



Muscular
tissue



Glandular
tissue



Epithelial
tissue

Part	Function	How are tissues involved?
Mouth	Break apart food and digesting starch	Glandular tissues secrete amylase
Oesophagus	Muscles push food into the stomach	Muscular tissue contracts to squeeze food and water into the stomach
Small intestine	Absorb nutrients into the blood stream	Glandular tissue secretes enzymes and muscle tissue causes peristalsis
Liver	Produces bile to digest fats	Glandular tissue secretes bile
Large intestine	Absorbs remaining water	Muscular tissue causes peristalsis