

# School Uniform

## Rules, guidelines & standards



Visit Our Website  
[www.ecclesfield-school.com](http://www.ecclesfield-school.com)

# Table Of Contents

---

|                                       |           |
|---------------------------------------|-----------|
| <b>A Message</b> from the Headteacher | <b>02</b> |
| <b>School</b> Uniform                 | <b>03</b> |
| <b>Summer</b> Uniform                 | <b>04</b> |
| <b>General</b> Appearance             | <b>04</b> |
| <b>PE</b> Uniform                     | <b>04</b> |
| <b>Purchasing</b> Uniform             | <b>05</b> |
| <b>Year Group</b> Ties                | <b>06</b> |

# A Message from the Headteacher



At Ecclesfield School, we understand how important it is for our children to dress appropriately. We believe that wearing a uniform helps create a sense of belonging and teamwork, and it also prepares our students for their future by developing their personal presentation skills. We ask that all students wear their uniform with pride, both in school and at school events, as they represent our community

In this brochure, you will find all the information you'll need in preparing for the new school year. We are keen to support you and your child by ensuring everyone receives the same, consistent message from the outset. We therefore ask that you consider this booklet as an aide when purchasing new uniform items and encourage you to email us with any questions if you are unsure.

At times, we have been very specific and make no apologies for any sense of being over-prescriptive. We understand how young people work and how clear boundaries are required when setting standards, be that in behaviour or dress. We want to be clear in order to help parents make appropriate choices.

Please ensure items (jumper/cardigan, skirt and tie) are purchased through our supplier to ensure quality and to guarantee that the uniform conforms to our school policy and logo. We do not authorise purchases from other retailers, as this is a bespoke item for the school. You'll find guidance on the purchase of trousers, shoes and shirts later in this brochure.

If you have any questions or feedback, please email [enquiries@ecclesfield-mlt.co.uk](mailto:enquiries@ecclesfield-mlt.co.uk) and we will be able to help. We thank you for your continued support and look forward to working together in the coming months.

# School Uniform

## Trousers

Students will wear **plain black** school trousers. Parents can purchase these from high street retailers, such as Asda, Marks and Spencer, John Lewis or Tesco, parents should be cautious of making purchases from fashion outlets whose products are unlikely to meet our requirements. The trouser leg should be straight and loose fitting from knee to ankle. Other styles of trouser (such as leggings, jeans, 'capri pants', harem pants, turn-ups and jeggings) are not allowed. Trousers made of other materials (such as linen, canvas or denim) are not allowed. Trousers must not have patch pockets or display any jean features such as rivet detail or jean stitches.

## Skirts

Some students may choose to wear a skirt. Skirts should be knee-length, not stretchy or pleated. Skirts should be on the same material as trousers (see above).

## Shirt

All students will wear a plain white shirt with traditional, stiff collar (no sports shirts). Shirts may be either long-sleeved or short-sleeved but they must have straight, loose arms and no embroidery. Shirts must be tucked in at all times. As with trousers, we recommend parents purchase shirts from high street retailers, avoiding fashion outlets.

## Tie

A clip-on school tie which has green stripes must be worn at all times. Ties are available from the school website.

## School Jumper/Cardigan

Jumpers/cardigans are compulsory and must be worn around the school building at all times. Jumpers must be plain black (with red piping) V-neck with an embroidered school logo.

## Coats

Students wishing to wear an outer layer will need to purchase a front-opening coat. This coat should be long enough to cover the school jumper. Items such as hoodies, tracksuit tops and sweat-tops are not allowed in school. Students wearing such items will have them confiscated until the end of the school day.

## Socks and Tights

Girls wearing skirts must wear tights (except in the summer term). Tights should be black, completely plain and at least 30 denier. There should be no patterns on the tights and students must not wear woolly tights or knee length tights. Socks should be black or white (and ankle length with a skirt).

# School Uniform

## **Bag**

Students need a school bag that is large enough to carry an A4 book/folder, all equipment, books for the day and when required, PE uniform. The student planner gives details of required equipment.

## **Footwear**

All students are expected to wear polishable, black shoes with a low heel for safe movement around school. Trainers are not allowed meaning no sports logos of any kind are allowed (even if they are black). Canvas shoes, sandals and pumps are not allowed. Plain, black, polishable boots are allowed as long as they are covered by school trousers and not evident. For this reason, boots cannot be worn with skirts. These expectations are in place for the entire year, even in the winter months. In case of bad weather, students are welcome to bring a change of shoes to make the journey to and from school easier but will be expected to be in appropriate shoes during the school day. Please feel free to send us any pictures of shoes in order to check suitability before purchasing items.

# Summer Uniform

Our Summer uniform will be in place after each Spring Bank half term and will continue until we break up for the Summer in July. Parents will receive a text when Summer uniform can be worn.

## **Jumper/Cardigan and Shirt**

During the above period, students will be allowed to remove their jumper. However, they must continue to carry their jumper/cardigan with them, in their bag at all times as they will be expected to be worn for formal school events such as assemblies, exams and celebration events. Both long-sleeved and short-sleeved white shirts will be allowed. Students must have shirts tucked in at all times and we respectfully remind parents that all under garments worn must be plain white.

## **Skirts/ Short**

Only the approved school skirt may be worn or tailored, black shorts – trouser like material i.e. no linen, sports short, cargo shorts etc. Shorts and skirts must be closer to knee length and be appropriate for wear in a professional setting. If students wish to wear socks with their skirt or shorts, they must be black or white.

## **Footwear**

Students must continue to wear correct footwear at all times.

# General Appearance

## **Ear-rings**

Students may wear a small single plain stud (not a ring) in each ear. Ear 'stretchers' are not permitted. No other piercings are permitted.

## **Jewellery**

Wristbands and bracelets are not permitted. Students may wear a watch but should not wear watches enabled to access mobile services (such as Apple Watch). Students may wear one ring. Necklaces should not be worn.

## **Make-up**

Make-up should be worn discreetly and should be natural looking and flesh-toned. Any students wearing excessive make-up will be asked to remove it. Students should not wear false eyelashes.

## **Nails**

Nails should be natural and neutral coloured and short in length (no longer than the finger tip). Nail art is not allowed.

## **Hair**

Hair should not be dyed in unnatural colours. Students wishing to tie their hair back should use plain, undecorated accessories to do so.

## **Undergarments**

Students should wear plain, white undergarments beneath their shirts.

## **Other**

Belts must be plain black. No headgear is permitted at all (except for religious reasons).

# PE Uniform

It is essential that all PE uniform is labelled with a student's name and form.

## **Compulsory branded items** (available from our school uniform provider)

Red PE shirt with school logo and black school PE sweatshirt with school logo.

## **Compulsory non-branded items**

Black PE shorts, supportive sports shoes. Students may choose longer black, sports leg wear (track suit bottoms/ running leggings/ gym pants). These do not need to be branded but we advise that these are purchased from a sports retailer. Students cannot wear fashion leggings.

## **Non-Compulsory branded items**

Black rain jacket with school logo

## **Supportive sports shoes**

You should not wear pumps, plimsolls or pull on shoes i.e. on laces. These are inappropriate for secondary school students and may well lead to damaging your feet, ankles and knees. For outdoor sports, red football socks are recommended. Football boots may be worn but are not compulsory. However, parents should be aware that sports shoes may get very muddy if used for outdoor sports: these will need to be cleaned before indoor use.

In the event of cold weather students scheduled to do outdoor sports may still be expected to go outdoors. On such occasions, students may wear a base layer beneath their red school PE shirt. This should be black, white or red.

Optional safety wear: students may wear a mouth guard where parents feel that this is appropriate. Shin pads can be worn for certain sports.

PE kit cannot be worn around school or in place of school uniform.

On days when students have PE or Games, we advise that they bring in a separate PE bag.

# Purchasing Uniform

All items should be purchased through our supplier to ensure the uniform conforms to our school policy and logo. While the school in no way benefits financially from uniform sales, we do not authorise purchases from other retailers, as these are a bespoke item for the school.

The options available to purchase are:

1. **E-shop** - purchases should be made using the e-shop unless you do not have internet access. The e-shop is available at: <http://imperial-sportsltd.co.uk/shop> (select schools).
2. **Phone orders** can be made where internet access is not available. Please contact Imperial Sports directly on 07931 969 252.
3. **Where individuals do not have access to 1 or 2 above**, the school may take receipt of your order to pass to the supplier on your behalf. A post box is located at Student Services. Please ensure your payment is included with your order form in a sealed envelope. The school does not accept money for uniform; this is a direct service to parents. Additional items can be ordered to be delivered to school for collection. Please select the 'deliver to school' option. Alternatively, you may have items delivered directly to your home but please be aware there is a cost for delivery.

## Year Group Ties



**Green**  
Year 11/6



**Yellow**  
Year 7



**Blue**  
Year 8



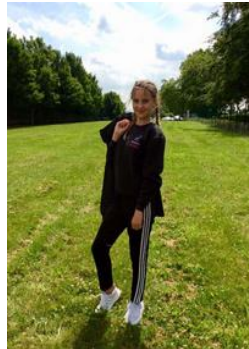
**Purple**  
Year 9



**Orange**  
Year 10



# Uniform Examples



# Uniform Examples



Too long, makes it harder to write/ type, poses health and safety issue during practical lessons. Colour not appropriate



Neutral coloured and short in length (no longer than the finger tip).



# Uniform Examples



# Contact Information



## Phone Number

0114 246 1156



## Website

[www.ecclesfield-school.com](http://www.ecclesfield-school.com)



## Email

[enquiries@ecclesfield-mlt.co.uk](mailto:enquiries@ecclesfield-mlt.co.uk)



## Social Media

Facebook: Ecclesfield School

X: @officialecco

Instagram: ecclesfieldschool



## Address

Chapelton Road

Ecclesfield

Sheffield

S35 9WD