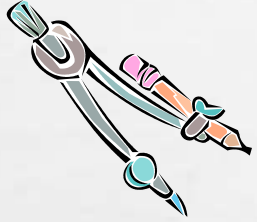


EXAMINATIONS

WHAT YOU NEED TO KNOW....

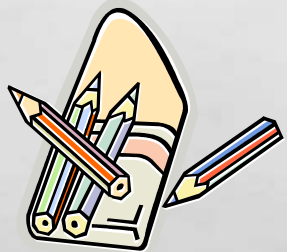


EQUIPMENT - WHAT YOU WILL NEED IN THE EXAM ROOM



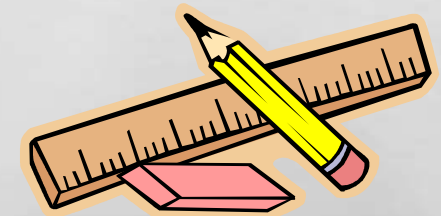
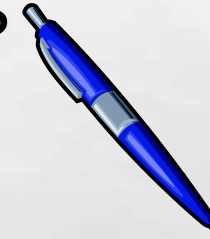
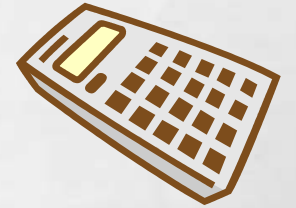
BASIC EQUIPMENT...

- BLACK PEN (TAKE SPARES)
- PENCIL
- RULER
- RUBBER
- SHARPENER



FOR SPECIFIC EXAMS, YOU MAY NEED...

- CALCULATOR
- COLOURED PENCILS
- COMPASS
- PROTRACTOR
- HIGHLIGHTERS



ROOMS USED FOR EXAMS

- SPORTS HALL (SH)
- LADY MABEL HALL (LMH)
- HEARING IMPAIRED UNIT (HIU)

COATS AND BAGS

- COATS AND BAGS SHOULD NOT BE BROUGHT INTO THE EXAM ROOM.
- IF YOU ARE IN THE SPORTS HALL, COATS AND BAGS WILL BE LEFT IN THE SPORTS HALL CHANGING ROOMS. THESE WILL BE LOCKED ONCE EVERYONE IS IN THE EXAM AND OPENED AGAIN AFTER THE EXAM IS FINISHED
- STUDENTS IN LADY MABEL HALL SHOULD ENTER THE EXAM THROUGH THE MAIN DOORS AND LEAVE COATS AND BAGS IN THE FOYER AREA. THE DOOR WILL BE LOCKED SO YOUR THINGS WILL BE SAFE.
- ONLY EQUIPMENT THAT YOU NEED FOR THE EXAM SHOULD BE TAKEN INTO THE EXAM HALL

MAKE SURE YOU ONLY TAKE IN WHAT YOU NEED...

- PENCIL CASES MUST BE CLEAR.
- MAKE SURE YOU HAVE EVERYTHING YOU NEED FOR THE EXAM. YOU WILL NOT BE ALLOWED TO GO BACK TO YOUR BAGS ONCE YOU HAVE ENTERED THE EXAM ROOM
- YOU MAY TAKE IN WATER TO THE EXAM BUT BOTTLES MUST BE CLEAR WITH NO LABEL. THIS MUST BE REMOVED BEFORE ENTERING.

UNIFORM

- FULL SCHOOL UNIFORM MUST BE WORN BY ALL STUDENTS

MOBILE PHONES / SMART WATCHES

- MOBILE PHONES /SMART WATCHES OR ANY OTHER ELECTRONIC DEVICE THAT STORES DATA ARE NOT ALLOWED IN THE EXAM ROOM. THEY MUST BE SWITCHED OFF AND LEFT IN YOUR BAGS.
- PLEASE MAKE SURE THAT YOU DO NOT LEAVE THEM IN YOUR POCKETS.

WATCHES

- IF YOU ARE WEARING A NORMAL WRIST WATCH, YOU WILL BE ASKED TO REMOVE THIS AND PLACE IT ON YOUR EXAMINATION DESK.

UNAUTHORISED MATERIALS

YOU MUST NOT HAVE ANY UNAUTHORISED EQUIPMENT ON YOU IN THE EXAM ROOM.
THESE INCLUDE:

- ROUGH NOTES
- EXAMINATION TIMETABLES
- BOOKS
- MOBILE PHONES / SMART WATCHES / IPODS
- BAGS / COATS
- CALCULATOR CASES / LEAFLETS
- TIPPEX

INVIGILATORS

- INVIGILATORS ARE EASILY IDENTIFIED. THEY ARE IN THE EXAM ROOM TO MAKE SURE THE EXAM PROCESS RUNS SMOOTHLY AND TO PREVENT ANY MALPRACTICE. STUDENTS ARE EXPECTED TO BEHAVE IN A RESPECTFUL MANNER TOWARDS ALL INVIGILATORS AND FOLLOW THEIR INSTRUCTIONS AT ALL TIMES
- IF THERE IS A PROBLEM WHILST YOU ARE IN THE EXAM ROOM, YOU MUST RAISE YOUR HAND AND AN INVIGILATOR WILL COME TO YOU. YOU MUST NOT SHOUT OUT AS THIS WILL CAUSE A DISTRACTION TO OTHER STUDENTS IN THE ROOM.

BEFORE THE START OF THE EXAM

- MAKE SURE YOU HAVE THE CORRECT EXAM PAPER IN FRONT OF YOU
- READ THE INSTRUCTIONS CAREFULLY ON THE FRONT OF THE PAGE
- PLEASE COMPLETE ALL THE BOXES INCLUDING YOUR NAME, SIGNATURE, CANDIDATE NUMBER AND CENTRE NUMBER IN THE SPACES PROVIDED.
- PLEASE LISTEN CAREFULLY TO THE INSTRUCTIONS GIVEN AT THE START OF THE EXAM BY THE CHIEF INVIGILATOR

DURING THE EXAM

- IF YOU MAKE A MISTAKE, JUST CROSS THROUGH IT WITH A SINGLE LINE AND CONTINUE IN THE SPACE PROVIDED. YOU MUST NOT USE TIPPEX TO CORRECT YOUR MISTAKES. IF YOU NEED EXTRA PAPER, PUT UP YOUR HAND AND AN INVIGILATOR WILL PROVIDE THIS.
- HIGHLIGHTERS AND GEL PENS MUST NOT BE USED IN ANY OF YOUR ANSWERS. YOU CAN HOWEVER, USE THEM TO HIGHLIGHT TEXT ON YOUR QUESTION PAPERS BUT MUST NOT, BE USED IN YOUR ANSWERS.
- YOU MUST NOT COMMUNICATE WITH ANY OTHER STUDENT. YOU MUST NOT ASK FOR HELP FROM ANOTHER STUDENT OR GIVE HELP TO ANOTHER STUDENT. IF YOU NEED ANYTHING, PUT YOUR HAND UP TO ATTRACT THE INVIGILATORS ATTENTION.
- INVIGILATORS WILL BE WALKING AROUND THE ROOM. THEY ARE SIMPLY THERE TO OBSERVE AND WILL NOT BE STOOD OVER YOU READING YOUR EXAM PAPER.

TIMETABLES

- YOU WILL RECEIVE AN INDIVIDUAL TIMETABLE
- PLEASE CHECK YOUR TIMETABLE FOR ANY QUERIES AND SEE THE EXAM OFFICE (K142) AS SOON AS POSSIBLE SO THEY CAN CHECK THAT ENTRIES ARE CORRECT.
- KEEP YOUR TIMETABLE IN A SAFE PLACE. IF YOU LOSE IT, DO NOT WORRY, OUTSIDE LADY MABEL HALL AND THE SPORT HALL, THERE WILL BE A LIST, IT WILL TELL YOU WHICH ROOM YOU ARE IN AND WHERE YOU ARE SAT.

EXPLANATION OF A TIMETABLE

Candidate no

Individual Candidate Timetable

Season : June (Summer) Exams 2011
 Name :
 Candidate Number : 8547
 UCI : 365740088547Y

Centre Number : 36574
 Year : 10
 Reg Group : 10E
 ULN :

Exam Code

Room

Row & Seat No

Date	Start Time	Board	Level	Element Code	Element Title	Component Code	Component Title	Duration	Room	Seat
Mon 16 May	8:45AM	WJEC/GCSE	GCSE/FC	015002	English Higher(D-A*)	0150005	English Paper 1 Higher	2h00m	SH	B11
Wed 18 May	2:00PM	WJEC/GCSE	GCSE/FC	015002	English Higher(D-A*)	0150006	English Paper 2 Higher	2h00m	SH	B11
Thu 19 May	2:00PM	AQA	GCSE/FC	BLY2H	Biology Unit 2 Tier H	BLY2H	Biology Unit 2 Tier H	0h45m	SH	E1
Tue 24 May	8:45AM	WJEC/GCSE	GCSE/FC	015302	English Litera Spec A Higher D-A*	0153003	English Litera Spec A Theory Higher	2h30m	SH	B10
Tue 07 Jun	2:00PM	AQA	GCSE/FC	BLY1H	Biology Unit 1 Tier H	BLY1H	Biology Unit 1 Tier H	0h45m	SH	I4
Wed 15 Jun	8:45AM	AQA	GCSE/FC	CHY1H	Chemistry Unit 1 Tier H	CHY1H	Chemistry Unit 1 Tier H	0h45m	SH	J8
Fri 17 Jun	2:00PM	AQA	GCSE/FC	FHY1H	Physics Unit 1 Tier H	FHY1H	Physics Unit 1 Tier H	0h45m	LMH	D4

Date

Time

Exam Board

Subject

Exam

Length of exam